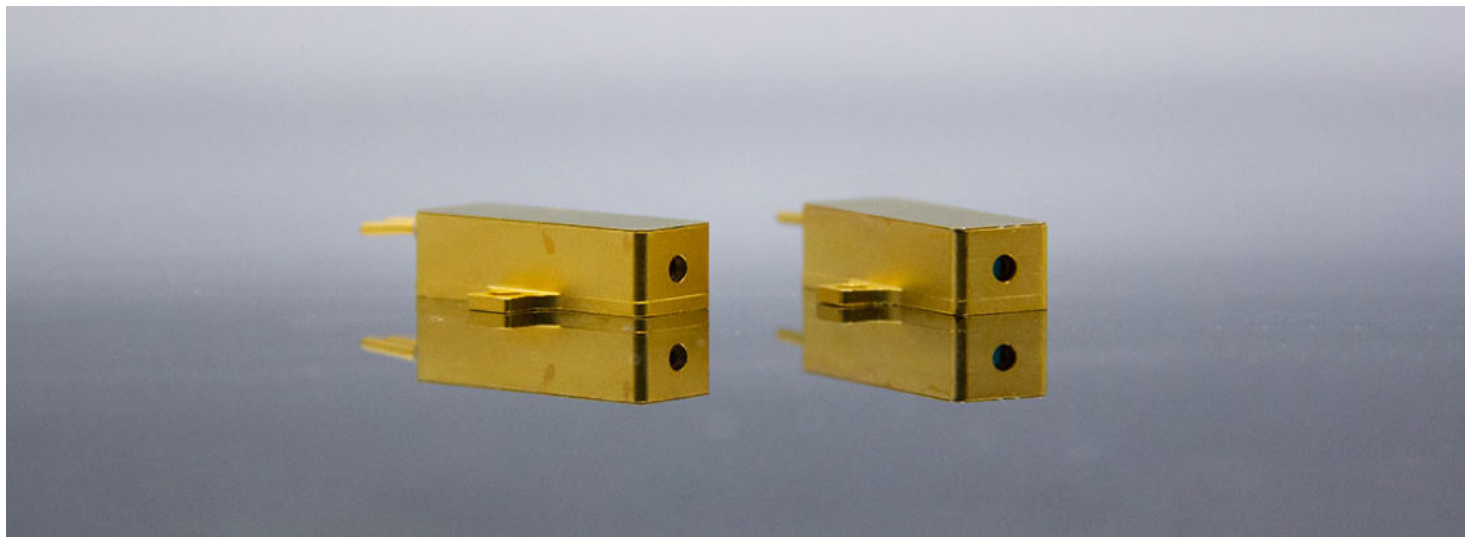


铟玻璃人眼安全激光器



激光器(1535nm)



特点

- 基于钇玻璃被动调Q技术
- 人眼安全
- 重量极轻
- 尺寸小
- 适用温度范围宽

应用

- 激光测距

产品型号: CL1535-40μJ-SL004, CL1535-100μJ-SL001, CL1535-200μJ-SL002, CL1535-300μJ-SL003

Model	CL1535-40μJ-SL004	CL1535-100μJ-SL001	CL1535-200μJ-SL002	CL1535-300μJ-SL003
Wavelength (nm)	1535			
Single pulse energy (μJ)	40	100	200	300
Pulse width (ns)	5	6	4.5	6
Beam divergence angle (mrad)	<12	<12	<12	<12
Repetition frequency (Hz)	1K	20	10	20
Life (Shots)	/	>2×10 ⁸	>2×10 ⁸	>2×10 ⁸
Cooling requirements	No refrigeration required			
Weight (g)	11	9.5	9.5	9.5
Size (mm)	35×8×6	28×8×6	28×8×6	28×8×6
Working temperature (°C)	-40~65	-40~65	-40~65	-40~65
Storage temperature (°C)	-50~90	-50~90	-50~90	-50~90

*可定制其他能量



激光材料模组



特点

- 近红外，人眼安全波段
- 易于集成，开发周期短
- 良好的稳定性和耐受性
- 高能效
- 输出能量范围宽
- 发散角小：<12 mrad

应用

- 激光测距
- 激光雷达
- DPSSL

产品型号: CLR15-200-M4, CLR15-260-M4, CLR15-300-M4

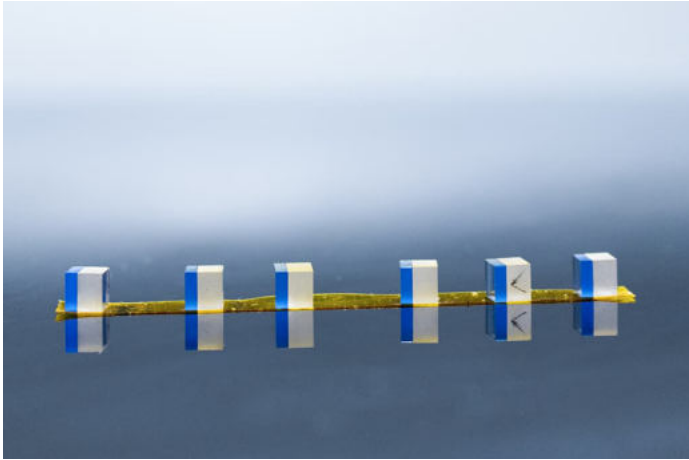
Model	CLR15-200-M4	CLR15-260-M4	CLR15-300-M4
Wavelength (nm)	1535		
Output energy (uJ)	200	260	300
Pulse width (ns)	4.5-5.1		
Repetition Rate (Hz)	1-30		
Full divergence angle (mrad)	8.4-12		
Size of pump light (um)	200-300		
Wavelength of pump light (nm)	940		
Power of pump light (W)	8-12		
Build up time (ms)	1.7		
Storage temperature range (°C)	-40~65		
Working temperature range (°C)	-55~70		

*可定制其他能量

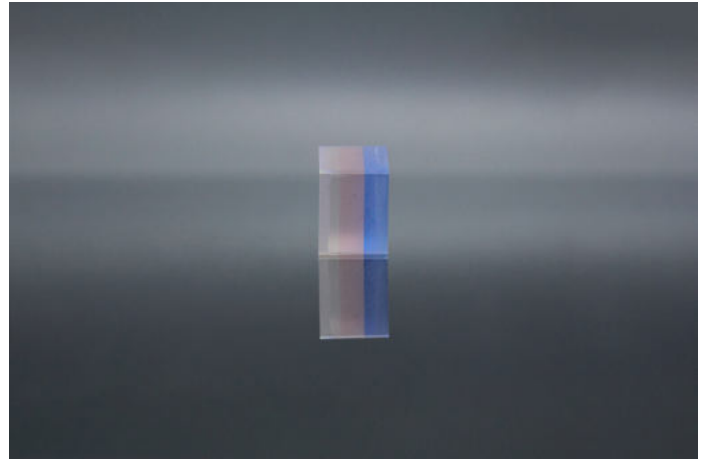


微片键合

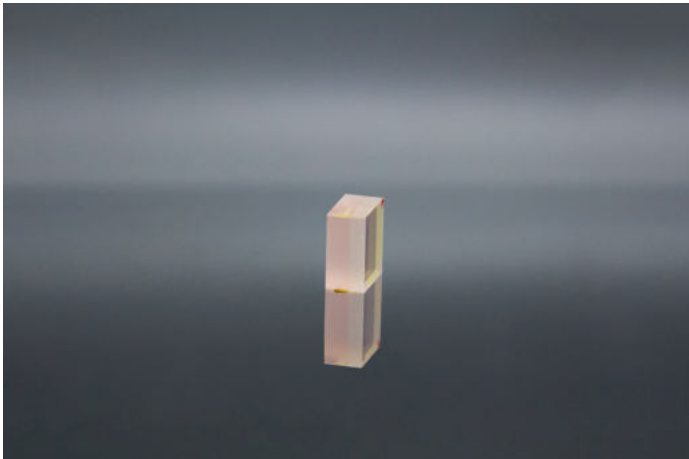
钇玻璃 + 钴尖晶石



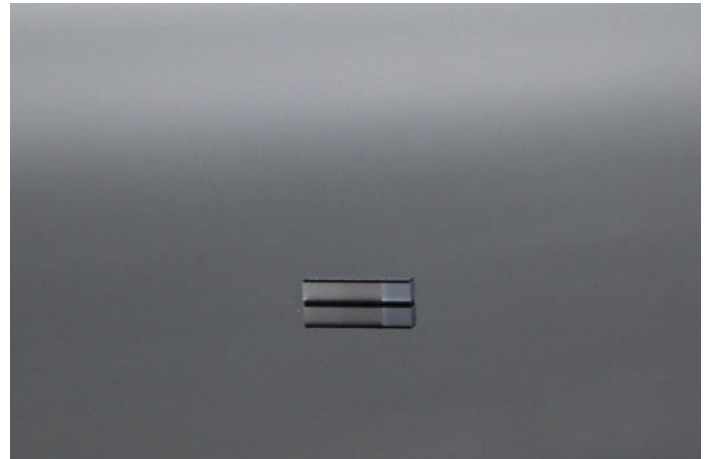
钇玻璃 + 钴尖晶石 + 输出镜



钇玻璃 + 输出镜



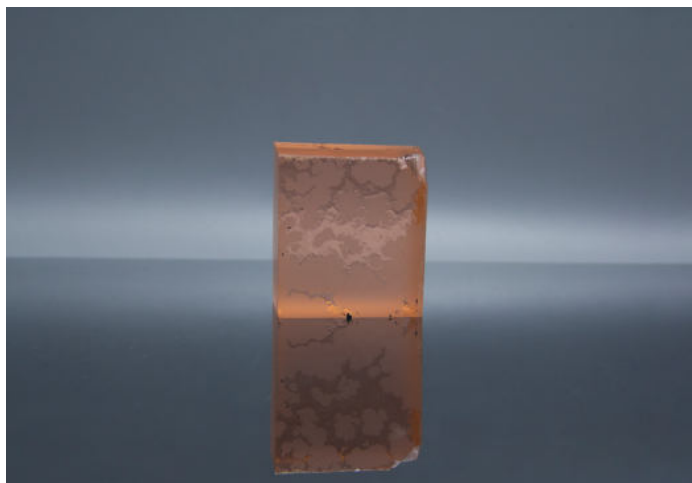
微片 (有硅散热片)



产品

Product	Coating	Application
Er,Yb:glass+Glass	S1,HR@940+AR@1535nm S2,AR@940+1535nm	End-Pumped
Er,Yb:glass+Co:spinel	S1,HR@940+AR@1535nm S2,AR@940+1535nm or PR@1535nm,T=5-15%	End-Pumped
Er,Yb:glass+Co:spinel+Glass	S1,HR@940+AR@1535nm S2,PR@1535nm,T=5-15%	End-Pumped

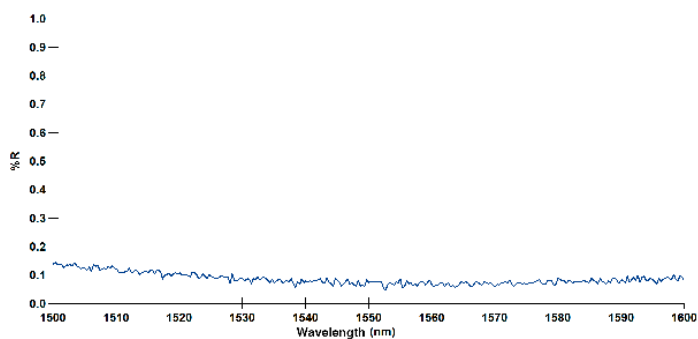
钇玻璃



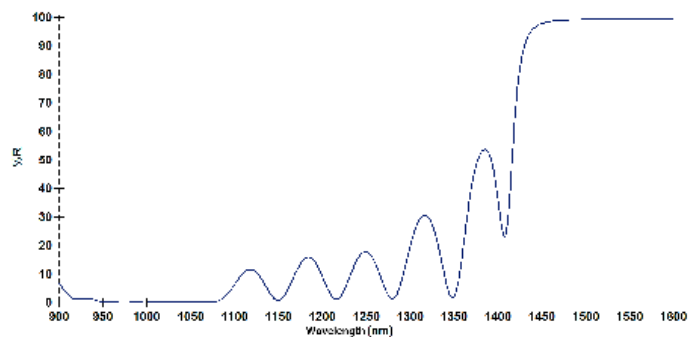
Size	Coating	Use For
1.3*1.3mm	HR@1535±5nm AR@910-980nm AR@1535±5nm	End-Pumped
2*2mm		
3*3mm		
1.1*1.1*11mm	HR@1535±5nm AR@910-980nm AR@1535±5nm	Side-Pumped
1.3*1.3*11mm		
1.5*1.5*11mm		
1.1*1.1*21mm		
1.3*1.3*21mm		
1.5*1.5*21mm		

*Customized for other size

增透膜测试曲线



高反膜测试曲线

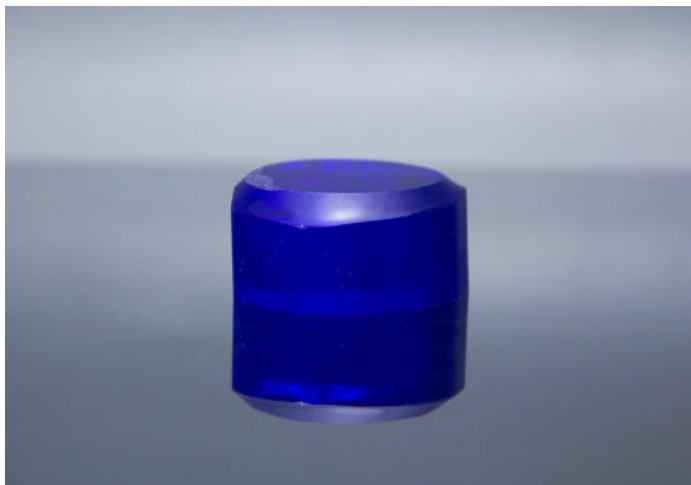


掺杂浓度 (接受定制)

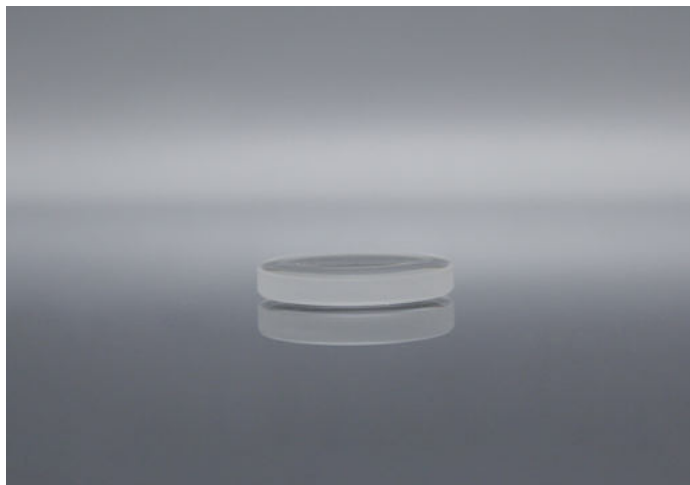
Product	Mass Percent of Er2O3(wt%)	Er3+ Ionic Concentration(cm-3)	Mass Percent of Yb2O3(wt%)	Yb3+ Ionic Concentration(cm-3)
EAT14-013	0.13	1.25*10 ¹⁹	22	2.12*10 ²¹
EAT14-026	0.26	2.6*10 ¹⁹	22	2.12*10 ²¹
EAT14-05	0.52	4.8*10 ¹⁹	22	2.12*10 ²¹
EAT14-10	1	9.6*10 ¹⁹	22	2.12*10 ²¹
EAT14-13	1.3	1.25*10 ²⁰	22	2.12*10 ²¹
EAT14-15	1.5	1.44*10 ²⁰	22	2.12*10 ²¹
WM4-E2Y2	2	1.78*10 ¹⁹	2	1.73*10 ¹⁹
WM4-E2Y4	2	1.78*10 ¹⁹	4	3.46*10 ¹⁹



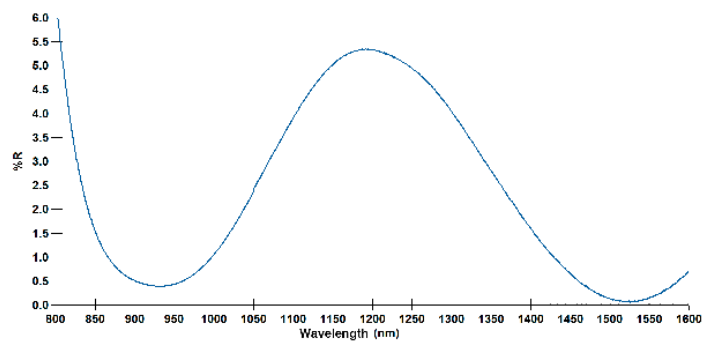
钴尖晶石



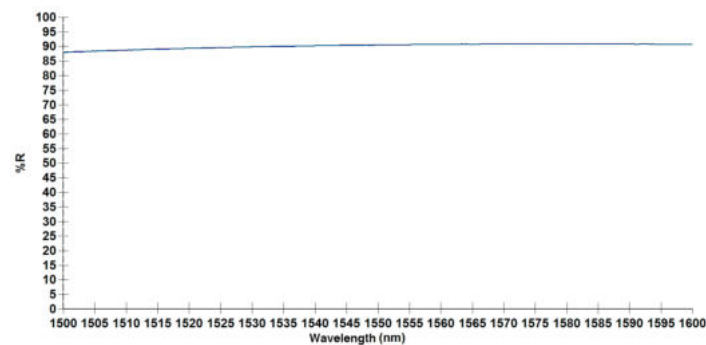
输出镜



增透膜测试曲线



保护膜测试曲线



常规产品

Size	Initial transmittance (%)	Coating	Use For
2*2mm			
3*3mm	85, 88,90,92, 93,95,97,98	AR/AR@1535±5nm	End-Pumped Side-Pumped
5*5mm			

*接受其他尺寸与初始透过率的定制

